

INDEX

SURVEY	4
INVENTORY	10
EXHIBITION	16

SUR- VEY

The Ex-Macello area (former slaughterhouse site) is part of the most recent experiences of urban regeneration by redesigning the largest of the urban voids left in the retreat of the twentieth-century city, preserving a large part of the container and memory of the place and opening the district to the city.

This impressive 15-hectare abandoned area will accommodate a new urban park of about 30,000 square meters, a university campus, one of the main Social Housing projects in Italy, commercial and cultural activities as well as a museum complex.







ZENITH



ZENITH

MADE IN U.S.A.

1000

1000

1000

1000

1000

1000

1000

1000

1000

1000

1000

1000

1000

1000

1000

1000

1000

1000

1000

1000

1000

1000

1000

1000

1000

1000

1000

1000

1000





IN- VEN- TORY

The profound knowledge of the site developed over years of work, attention and care made it possible to read the space with a magnifying glass and view individually the elements that make it up and characterize it: elements that make up a whole and which, although they seem to disappear in it, possess both intrinsic and potential value.

The focus is on the theme of valorizing the resources present in abandoned sites, analyzing how many elements and objects are an intellectual, material and economic capital. In this regard, reuse is understood as a fundamental practice today for the world of design and architecture, an operation capable of preserving and producing value.

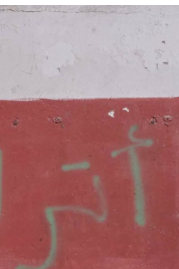
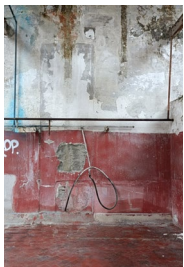
UA-

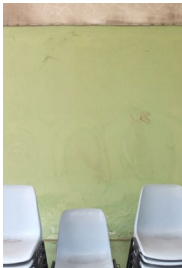
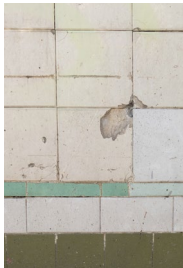
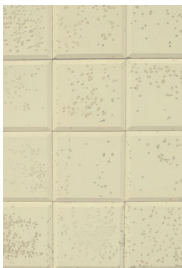
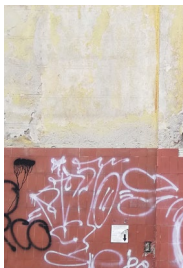
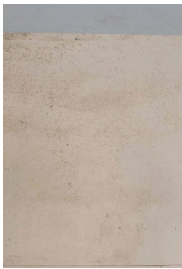
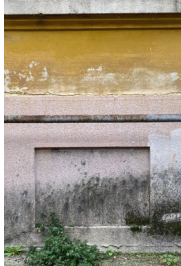
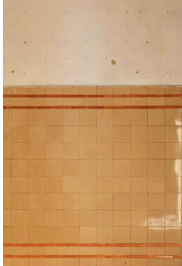
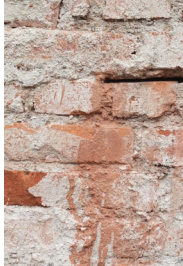
L-
C-
ON
NGS

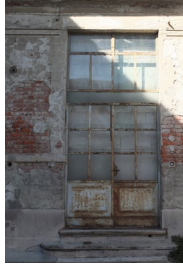
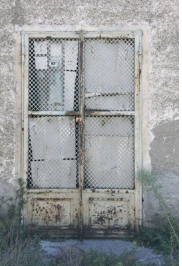


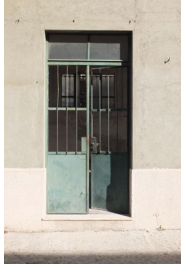


WALLS









DOORS

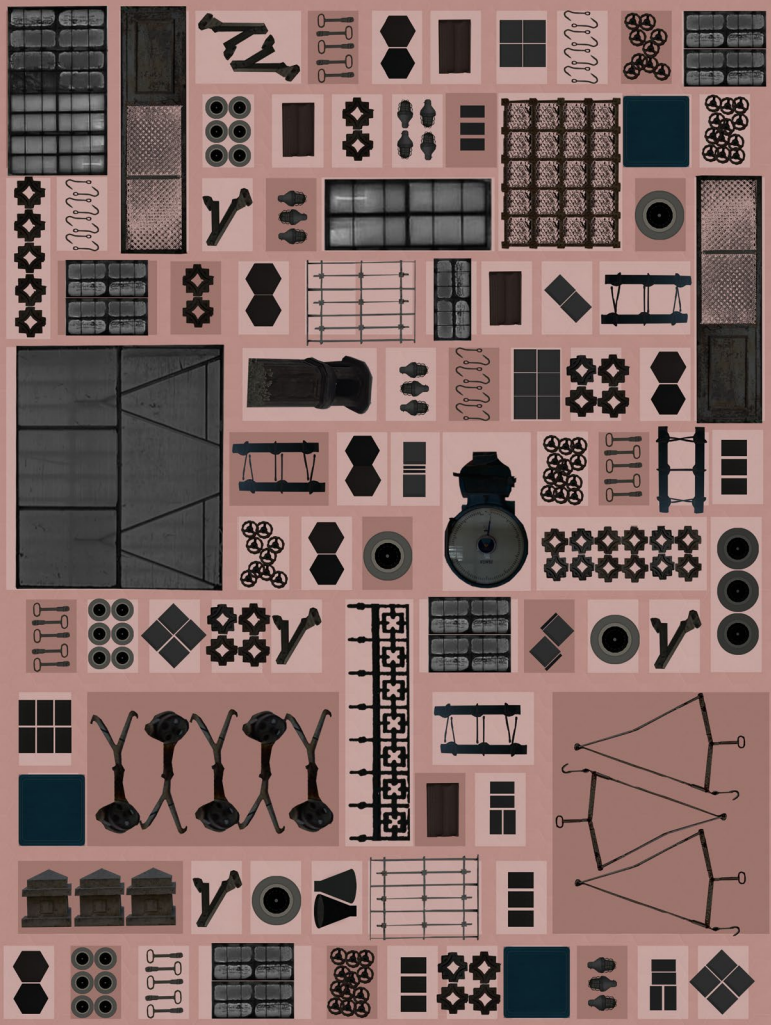


EXHI- BI- TION

A series of elements were removed and collected from the buildings about to be demolished or restructured and repurposed and then repositioned as if they were tiles composing a texture on the floor. Other objects and elements have instead been photographed and shown on the walls generating a pattern in which the subjects are represented in

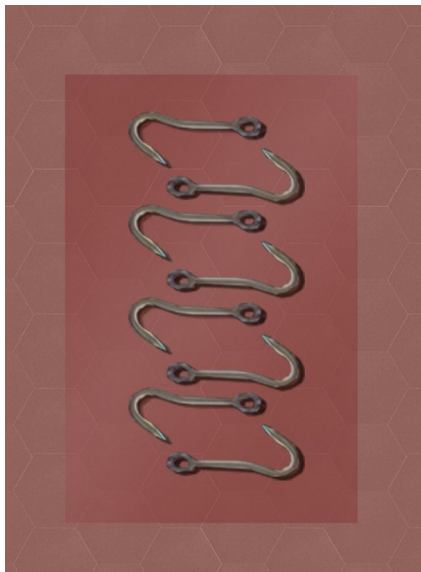
a serial way.

The result can be read in different ways and levels of depth: as abstract decorations in which shapes and colors alternate, as a focus on the beauty and particularity of the artifacts themselves, as a beginning for contemplation on the meaning and future of these objects.









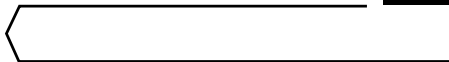
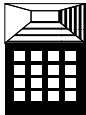
STANTEC

Present in Italy for 50 years, Stantec stands out for its innovative and integrated approach to design, with a focus on sustainability. Its commitment towards the urban regeneration of sites that await to be claimed by the city has grown as cities keep on evolving, aiming to better the quality of life and respecting the environment.

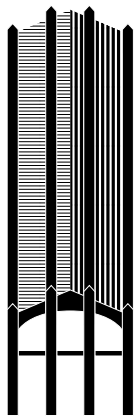
Infrastructure/Environment/Safety/
Decommissioning/Energy/Water/
Waste/Real Estate/Transportation/
Sustainability/ESG

Its purpose is **"Design with community in mind"**: placing the well-being of the community in which it operates at the heart of its designs.

DECOMMISSIONING

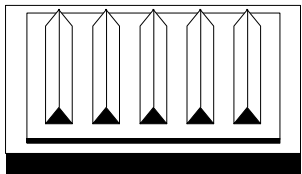
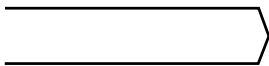


SUSTAINABILITY



EFFICIENCY IN THE USE OF NATURAL RESOURCES (ENERGY, WATER, WASTE), CORPORATE SOCIAL SUPPLIER RESPONSIBILITY, SUSTAINABILITY REPORTS, NATURAL CAPITAL, DEVELOPMENT OF ECOSYSTEM SERVICES, NATURAL BASED SOLUTIONS

REGENERATION



ARCHITECTURE



DESIGN SERVICES

A VALUABLE COLLECTION OF THINGS

Designer:  **Stantec**

Technical sponsor: **Artemide**

Thanks for the cooperation to
Giacimenti Urbani
Redo Sgr
Armofer

www.stantec.com/it

