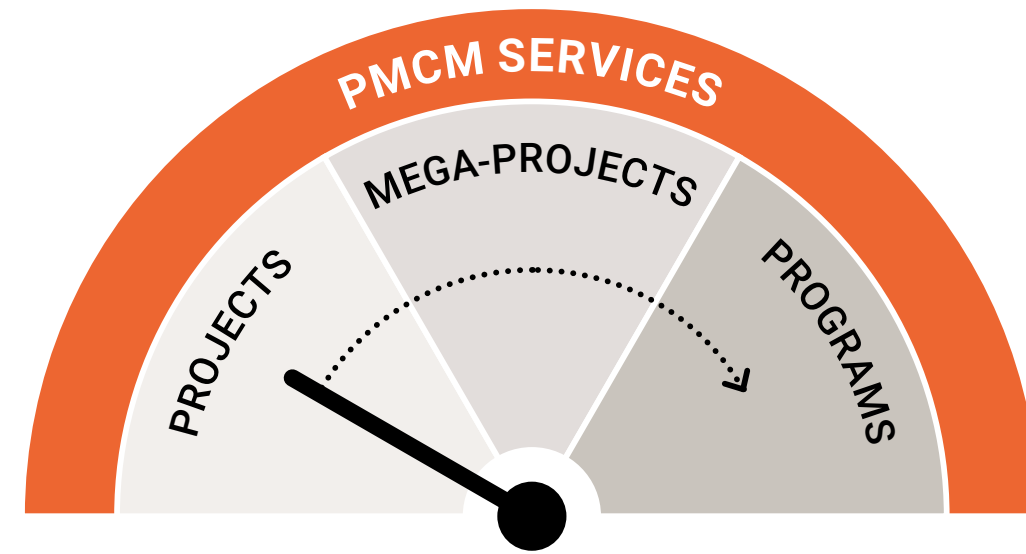


Program & Construction Management

Supporting owners in the successful delivery of programs, projects, and mega-projects across North America

Scalable solutions to meet your needs

Stantec works hand-in-hand with our clients to help deliver capital expenditures—whether it is a single project, a large mega-project, or a program encompassing many projects.



What is PMCM?

PMCM services provide support to owners planning and executing projects and programs of work to help them oversee delivery. These services are an extension of staff and can be part of an integrated team with the client. The primary categories of PMCM services are:

- Program Management
- Construction Management
- Owner's Advisor/Representative





\$195B

In completed projects

40+

Years of program/construction management experience

100+

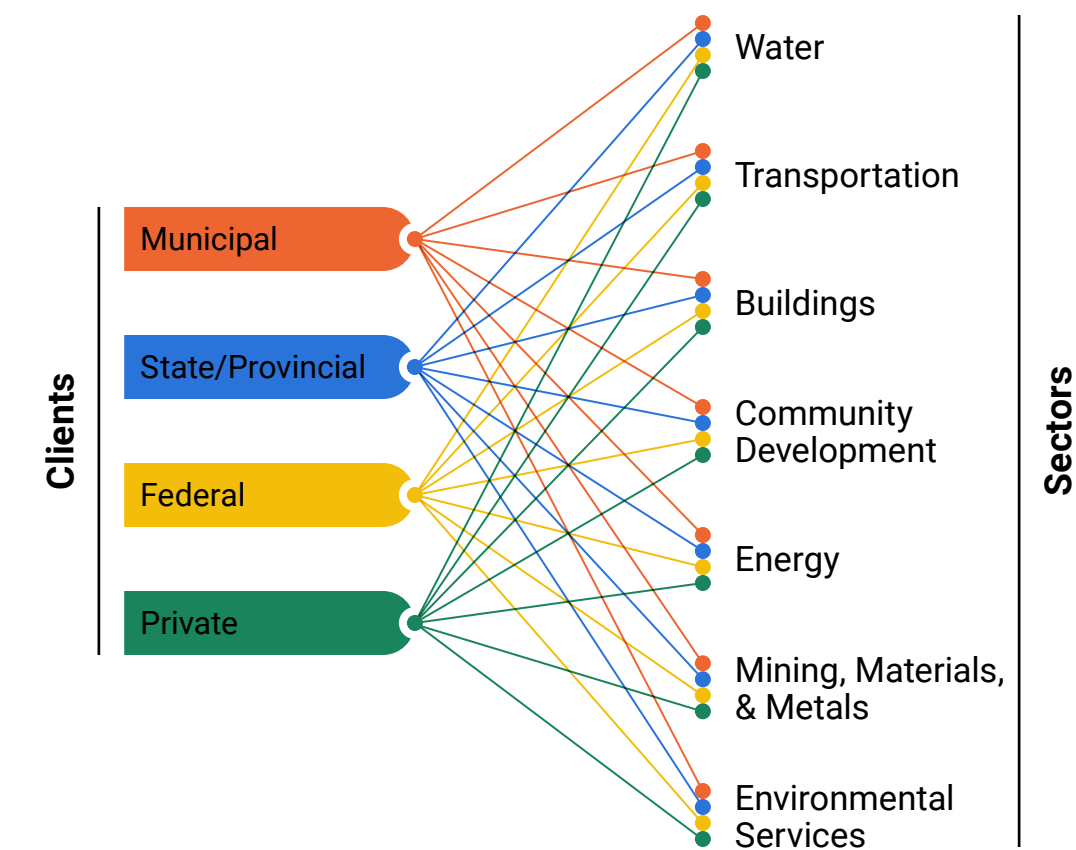
Large Capital Programs around the world

How can Stantec help?

We act as your strategic partner, helping to translate your business strategy into successfully delivered projects.

Whether providing strategic advice, leading the project as your project executive, or augmenting your existing staff, our flexible, scalable solutions keep projects aligned with your objectives while enhancing the predictability of project outcomes.

For over 40 years, we have been providing independent, objective advice to clients on thousands of complex program management, construction management, owner's engineer, and transition planning projects in a diverse range of sectors, including:



PMCM services involve partnering with our clients to coordinate any required functional areas.

Each function plays a critical role in maintaining the momentum of a project/program. Our approach is to 'right size' these services depending on our Client's needs and internal capabilities. The graphic below highlights typical functional areas; your specific organization may have fewer or additional needs.



We are located to serve you

Stantec experts are spread across North America, providing coverage to meet any need that arises.



Stantec Approach

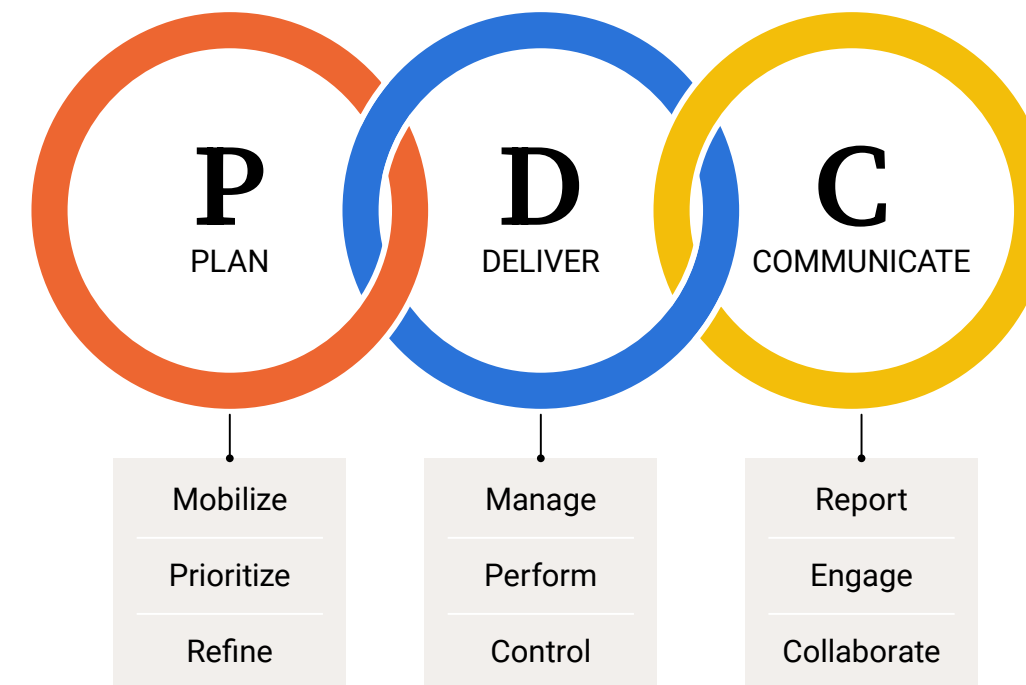
Implementing worldwide best practices, innovative solutions, and technical knowhow to support your capital improvement strategy.



Delivering Your Program

Given the typical PMCM functions, there are three main areas that comprise our approach to capital delivery:

- 1. Plan:** Initial mobilization, benchmarking, and ongoing refinements during delivery.
- 2. Deliver:** Overall program management, construction management, project management, technical delivery, and control of scope, cost, schedule, and quality.
- 3. Communicate:** Internal and external communication, including reporting and stakeholder outreach.



Capital Delivery

Each of these areas are interrelated and feed into one another—for example, the initial plan guides implementation, delivery commences, and progress is communicated to stakeholders via reports. Necessary adjustments to delivery are then determined, which are coordinated to make refinements to the baseline plan and overall delivery strategy, and this revised plan then guides delivery moving forward.

Ongoing, consistent, and transparent communication is key to success. The project controls tools and methodologies that we leverage during delivery create “one source of truth” that helps the team easily communicate with internal and external stakeholders. The feedback we receive helps us better refine our delivery plans and manage scope, schedule, cost, and quality.

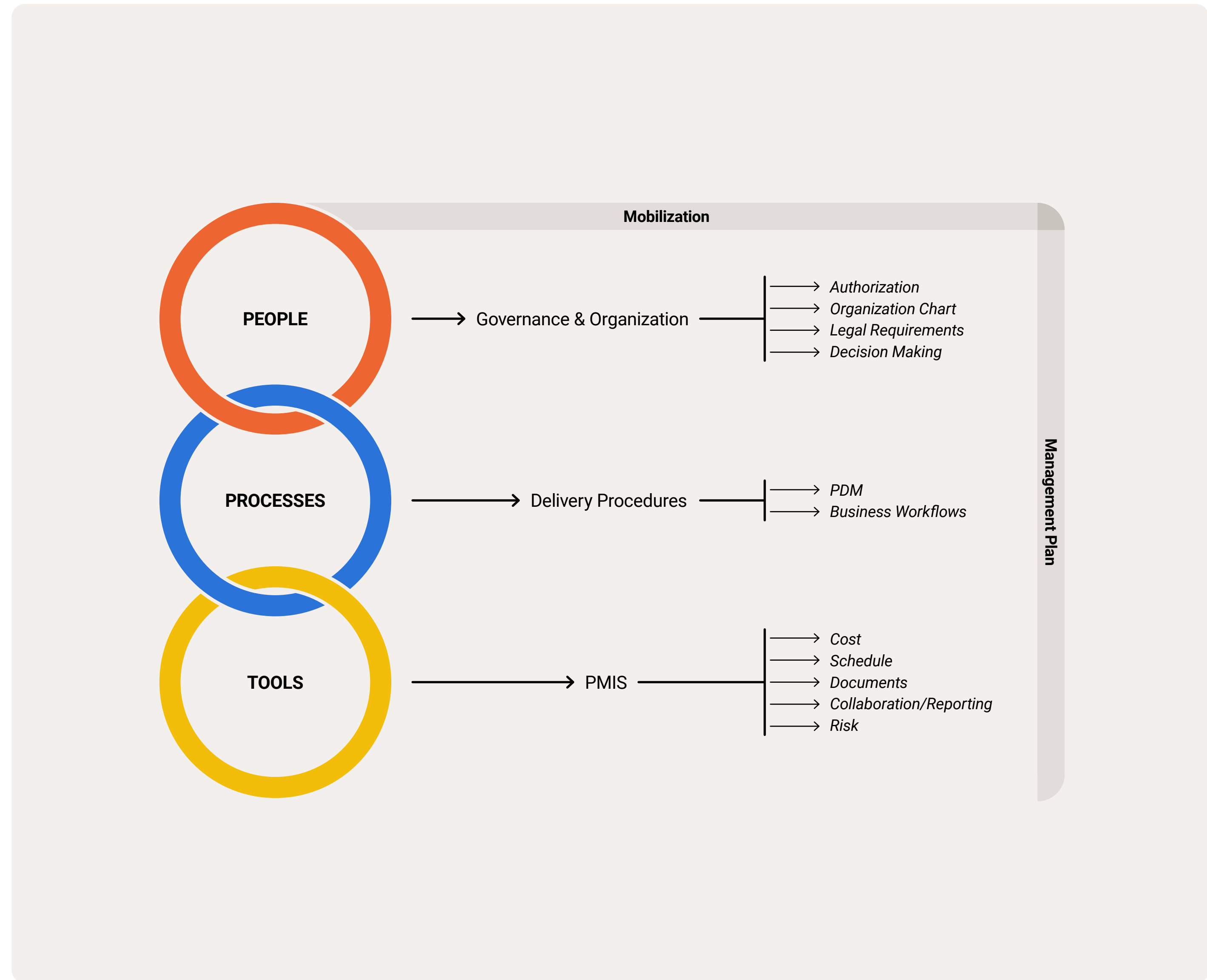
People, Processes, and Tools

Ultimately, effective capital delivery is about the right people delivering the right projects at the right time and pace using the right processes and tools.

People: Provide policies, organization, program delivery resources, and special expertise to address program needs. Establish the governance and decision-making parameters and legal requirements to guide delivery.

Processes: Optimize and streamline business processes and delivery procedures to enable the team to effectively execute the program.

Tools: Select and implement state-of-the-art project controls tools and a Program/Construction Management Information System (PMIS) for improved management, monitoring, and reporting of program delivery.



Recent Experience

Stantec offers clients customized, proven approaches to deliver consistency, control, governance, and transparency across the entire program lifecycle—saving time and money.

For over 40 years, we have delivered on thousands of complex major capital and operational projects in a diverse range of sectors.



Water

Global experience scaled to meet your global community's water needs.

Cities are facing increasing demands from growing populations, aging infrastructure, regulatory drivers, and climate change. Large water programs and mega projects are becoming more and more critical and common to address these needs. As utilities and organizations manage increases in infrastructure spending, they must also deliver projects and initiatives within tight schedules and budgets.



Buildings

Passion and progressive thinking for successful projects—within scope and without surprises.

Communities are continually in need of new and upgraded facilities to support modern life. Buildings must be efficient, beautiful, innovative, technologically robust, and built for growth—all at the same time. Exemplified through thousands of completed facility projects, our unparalleled portfolio ranges from hospitals and airports to multi-campus master plans and entire university campuses throughout North America.



Transportation

Innovative solutions that enhance how we live and get around our communities.

We create the connections that get people and goods from here to there and offer solutions that help communities improve everywhere in between. When undertaking any transportation effort, Stantec aims to increase mobility while protecting and enhancing the quality of life for the people our projects serve. We bring focused expertise and collaborative teamwork to deliver results that enhance and advance our neighborhoods.



Client Solutions

Helping clients successfully plan, organize, manage, and implement change.

We specialize in capital project planning/scheduling, P3 project delivery, and risk management to successfully deliver your project. Our team enables change through leadership engagement and detailed operational planning. Working collaboratively with our clients, we bring a distinctive blend of strategic guidance, project management skills, and change management practices to drive organizational transformation success.



Energy

Effectively minimizing project risk by collaborating with experts through structured integration.

Our strategy is to deliver exceptional Program & Construction Management services with a commitment to reducing risk and delivering high project standards of safety and quality. Driven by our passion for excellence, and guided by our team of industry experts, we strive to provide innovative and efficient Program Management techniques that exceed our clients' expectations.

Pure Water San Diego Program

City of San Diego
San Diego, California

Increasing San Diego’s resilience and water reliability via the first potable reuse surface water augmentation project in California.

The City retained Stantec to provide program management services for the multi-billion-dollar multi-year phased program that uses proven technology to produce a safe, reliable, and cost-effective water supply for the City. The Program will help the City overcome its water challenges by transforming the City’s water system into a complete water cycle that maximizes use and reuse of the City’s water supply. At full implementation, the Program will provide up to one-half of San Diego’s water supply locally while reducing the City’s ocean wastewater discharges. The Pure Water Program has gained acclaim as one of the most significant, effective water reuse programs today—the Program and its leadership have been recipients of more than 15 state, national and global awards.



Willamette Water Supply Program (WWSP)

Tualatin Valley Water District/City of Hillsboro/
City of Beaverton (the Partners), Oregon

Delivering a new water supply system to serve over 300,000 residents and some of Oregon’s largest employers for the next 100 years.

Since 2015, Stantec has been providing program and construction management services for the Willamette Water Supply Program (WWSP) in Oregon. WWSP will provide a new, earthquake-resilient water supply by 2026 to the Tualatin Valley Water District, and the cities of Hillsboro and Beaverton, OR (WWSP Partners.) The program includes approximately 30 miles of 48-inch to 66-inch steel water transmission lines, turnout connections to distribution systems, a new water treatment plant with an initial capacity of 60 MGD, and an initial 15 MG of storage.

Stantec’s program services for WWSP include program management, risk management, procurement and contract administration, quality assurance, program controls and document management, design management, construction management and inspection, safety and security management, facility testing and commissioning support, permitting, and public outreach support. Stantec’s construction management and inspection services include more than 20 separate construction projects located in seven jurisdictions. Stantec helped the WWSP Partners receive nearly \$640M of Water Infrastructure Finance and Innovation Act (WIFIA) financing and continues to provide reporting as required by the Environmental Protection Agency (EPA).



San José-Santa Clara Regional Wastewater Facility CIP Program

City of San José Environmental Services Department
San José, California

Addressing rehabilitation needs and increasing operational capacity at one of the largest regional wastewater treatment facilities in the western United States.

The City retained the Stantec Team to support planning and management of their Capital Improvement Plan (CIP), which involves extensive rehabilitation to their regional wastewater facility, as well as the development of new processes and improvements for portions of the existing plant. Our team completed a 120-day rapid mobilization effort, including over 80 workshops and meetings, to set-up needed program tools and processes, forecast resources, and validate 120 CIP projects identified in a prior plant master plan. At present, the co-located Stantec and City integrated team has helped grow delivery of the CIP from less than \$20 million to over \$150 million per year.



Program Management Services Team (PMST)

Department of Watershed Management (DWM),
City of Atlanta, Georgia

Supporting Atlanta's program delivery efforts for over two decades, achieving on-time completion of over 1,100 Consent Decree (CD) milestones and fostering 40% local/small business enterprise participation.

In 2001, the Stantec Team was selected as program manager for the Clean Water Atlanta Program—one the highest-profile CD-driven environmental remediation programs of its kind in the nation. Stantec assisted the DWM in utilizing a risk-based assessment approach to prioritize the rehab and capacity relief projects, reducing CD costs by \$670 million through regulatory negotiations, technical innovation, and efficient project delivery. In 2014, our team added resources to expand our support beyond Clean Water Atlanta to also include program management services for the DWM's overall water, wastewater, and stormwater Capital Improvement Program (CIP) and strategic initiatives, further supporting DWM's goal of becoming a Utility of the Future.

Capital Program Management & Program Controls

Metropolitan Sewer District of Greater Cincinnati (MSD)
Cincinnati, Ohio

Helping successfully deliver one of the largest public works programs in the history of Cincinnati—greatly reducing sewer overflows and their impact on the community.

After successfully serving as construction manager for phase 1 of the Wet Weather Improvement Program (WWIP) to reduce sewer overflows across Cincinnati, Stantec was retained to provide program management and program controls services for Phase 2A and subsequent phases of the WWIP. Our team completed the mobilization and start-up of the Program including the stand-up of an integrated program management office within MSD’s wastewater engineering department— including migrating nearly 185 active capital projects into a new e-Builder based PMIS platform for project delivery. The program is underway with continued emphasis on program delivery and meeting project delivery performance KPIs.



Iona Island Wastewater Treatment Plant (IIWWTP) Program

Metro Vancouver
Vancouver, British Columbia

Improving both water quality and the surrounding marine environment as part of the largest capital program ever undertaken by Metro Vancouver.

The \$9.9 billion (CAD) multi-year program includes construction of a new 500ML/day (132 MGD) tertiary treatment facility together with a range of ecological restoration and off-site works projects that will improve the connection between infrastructure, the community, and the environment. Stantec provides a multi-disciplinary team of resources to deliver a broad range of program management and technical support services. Our team is integrated with Metro Vancouver staff, working together collaboratively to manage the development and implementation of the Program. With a focus on sustainable resource recovery, the upgraded plant will integrate with surrounding ecological restoration efforts and provide economic opportunities for First Nation entities.

Vassar Brothers Medical Center New Patient Tower

Vassar Brothers Medical Center
Poughkeepsie, New York

This new 756,000 SF facility is a marquee project for the region and serves as a medical haven to the community.

Stantec's project management group is overseeing the team, budget, and schedule for this new 294-bed facility that will house an emergency department, surgery and intensive care units, medical / surgical units, central sterile facilities, public areas, and administrative and additional support spaces. Our team is also serving as the liaison to present to the Board of Directors and the community, confirming all critical parts of the permitting, planning, and implementation process.

The 756,000 SF facility serves as a marquee project for the Poughkeepsie region and will transform the current landscape into an eight-story tower serving as the hospital's sterile processing and central plant, parking, emergency department, conference center, and cafeteria.



Hackensack Meridian Health, Hackensack University Medical Center Pavilion and Central Utility Plant

Hackensack University Medical Center
Hackensack, New Jersey

A state-of-the-art Pavilion and Central Utility Plant that elevates, benefits, and supports the entire Medical Campus.

Our project management team was selected to help manage a \$714M, 530,000 SF Pavilion and 44,000 SF Central Utility Plant at Hackensack University Medical Center. This new nine-story Pavilion spans over 2nd Street and consists of a ground-level drop off and lobby. Stantec is providing full project management services throughout the project duration which include management and oversight throughout the conceptual, design, construction, and occupancy phases.

Specifically, Stantec is managing the development of the project scope, schedule and budget, value engineering process, selection of the project team and contract negotiations, developing a permitting strategy, coordinating AHJ approvals, constructability reviews, coordinating operational impacts, overseeing construction, and managing the occupancy and close-out.



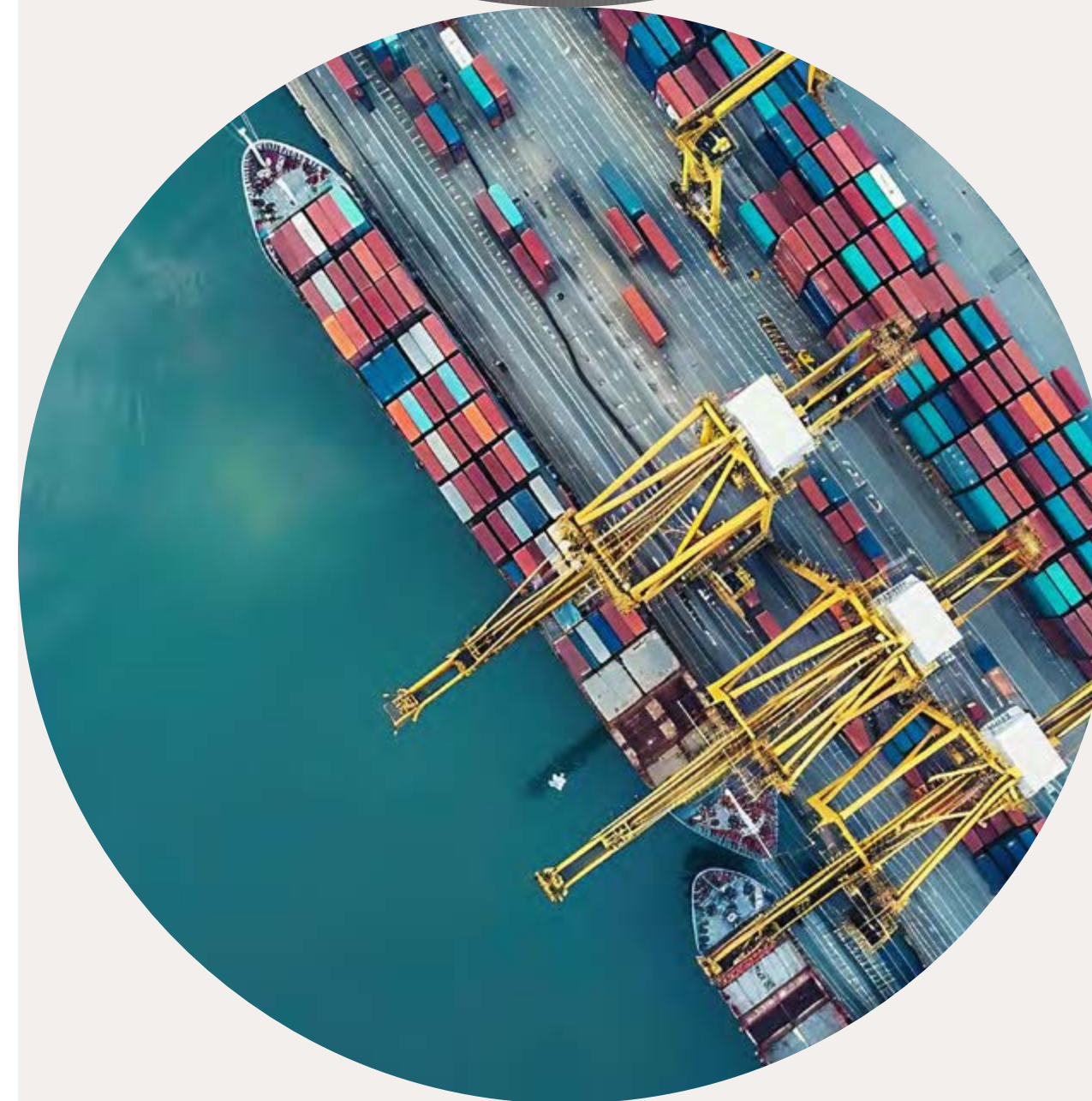
Memorial Sloan Kettering Cancer Center - Zuckerman Research Center, Fit-out Projects

Memorial Sloan Kettering Cancer Center
New York, New York

Boosting innovation and transforming science through project management services for Mortimer B. Zuckerman Research Center's cutting-edge facilities.

Stantec provided comprehensive project management services for Phase II of the fit-out of the 23-story Mortimer B. Zuckerman Research Center. This facility includes two Vivarium levels below grade that are approximately 20,500 SF each. There are three MRIs and a 1,600 SF Radiochemistry Lab located on the subcellar level, where work with radioisotopes is performed.

The 1st floor houses a state-of-the-art, 350-seat auditorium/conference center and includes the permanent entrance from 68th Street into the Conference Center, along with an additional conference room and the Graduate School classroom. The 7th and 8th floors contain the 27,000 SF Cell Therapy and Cell Engineering Lab facility designed to meet the cGMP standards of the Food and Drug Administration.



Confidential Client, Port Expansion and Infrastructure Upgrades

Confidential Client
Confidential Location

Revolutionizing port infrastructure with comprehensive solutions.

The project involves a 550-foot barge berth and two additional deep-water wharf extensions over 1,500 ft, with train rail trestle and a vehicle trestle, with additional connections from the wharf to the land. The project scope also includes installations of remaining utilities (water, sanitary, electrical), storm water drainage, grading, and paving.

The team is composed of several Stantec disciplines—project and agency construction management, marine structural engineering, coastal engineering, pile and steel reinforcing, and safety teams—from different office locations. When complete, the project will serve as a primary trade route for the County, as well as the South New Jersey Region and the Eastern US Sea Navigational Area.

Simon Fraser University

Simon Fraser University (SFU)
Burnaby, British Columbia

Transforming a campus into a vibrant space that is more in tune with the surroundings and an inviting campus for the community to enjoy.

To meet the needs of their growing student body, SFU constructed a new student union building and sports stadium. We provided project management services and served as client representative for contracting services. The completed student union building is entirely devoted to students, with lounges, study areas, meeting rooms, and recreational facilities. The new stadium provides Simon Fraser student-athletes with a permanent outdoor home. This facility transformed campus-life to a more vibrant meeting place that connects students, athletes, alumni, and the surrounding community.



Fort Edmonton Park Enhancement

City of Edmonton
Edmonton, Alberta

Fort Edmonton Park was transformed to expand and enhance its celebration of Edmonton's cultural heritage.

The City of Edmonton engaged Stantec as the Program Manager and Owner's Representative to manage and deliver the Enhancement program. The diverse Stantec project management team performed scope validation, stakeholder consultation (involving Indigenous First Nation partners), design coordination, environmental control, budget and schedule control, and overall management of the construction manager. The successful delivery involved a partnership among the Stantec Program Management team, the City of Edmonton, and the Fort Edmonton Management Company.

The result was the successful delivery of features and attractions including the award-winning Indigenous Peoples Experience (certified LEED Silver), a new Front Entry Guest Admissions Plaza, expanded Midway attractions, a new Steam Train Maintenance Facility, and a full replacement of parkwide underground Utilities and Streetcar Track system. The project was delivered under budget and within the scheduled June 2021 grand re-opening.



Honolulu Authority for Rapid Transportation - East Section CE&I/CM Services

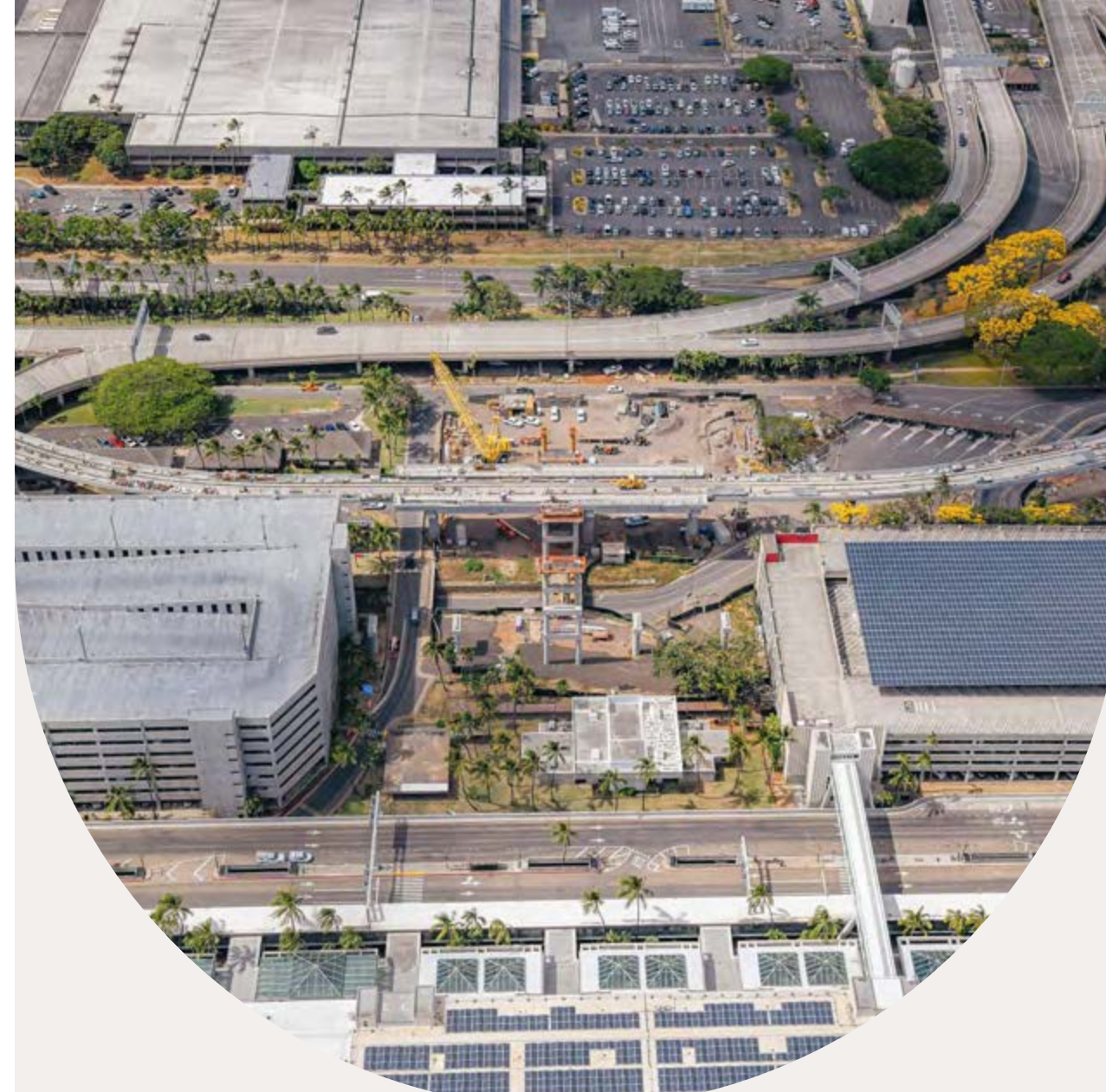
Honolulu Authority for Rapid Transportation (HART)
Honolulu, Hawaii

Helping lower Hawaii's carbon footprint, stimulate their economy, and create a safer mode of transportation.

Our team is providing construction engineering and inspection services (CE&I) for the Honolulu Rail Transit Project (HRTTP). The HRTTP will construct a 20-mile passenger rail system connecting East Kapolei in West Oahu to Ala Moana Center in Honolulu's dense urban core with 21 state-of-the-art stations and a combination of at-grade and elevated guideway.

We are supporting HART to oversee multiple construction packages throughout the entire project life cycle, providing services like construction management (CM), pre-construction support, constructability review, resident engineering, project controls, and inspection. Our integrated CM team focuses on the field activities of the contractors on-site are all in support of the overall HART Rail and Transit Program.

This project's benefits include helping decrease Hawaii's carbon footprint and dependence on imported oil, minimizing road congestion, stimulating the economy by creating jobs, and providing another safe mode of transportation.



George Bush Intercontinental Airport (IAH) Terminal Redevelopment

Houston Airports
Houston, Texas

Maintaining operational efficiency and minimizing construction impacts on the traveling public.

As the lead firm in the Houston Aviation Alliance (HAA) Joint Venture, Stantec was selected to provide Program Management Support Services (PMSS) for the Houston Airport System. This project will provide a modern, state-of-the-art facility with a new terminal that will have 18 gates for international airlines. The aesthetics of the building will be improved through a more open, modern design that relies heavily on natural light and offers passengers an intuitive flow through the entire travel process.

The IAH Terminal Redevelopment Program (ITRP) includes refurbishing the existing Mickey Leland International Terminal (MLIT) and demolition of the Terminal D/E parking garage to create an international terminal processor between Terminals D and E, where all the international ticketing counters, security checkpoint lanes, and baggage claims will be consolidated. The ITRP will include two concourses in each terminal. This plan resolves current and future roadway and curbside capacity constraints in the central terminal area, improves baggage handling system capacity and reliability challenges, and significantly improves the overall international passenger experience.

Metro Crenshaw/LAX Corridor Extension

Los Angeles County Metropolitan Transportation Authority
Los Angeles, California

Construction management on LA's most complex metro line project yet. It's the missing link that finally connects communities with LAX.

This complex 8.5-mile, \$2.1 billion light rail line provides enhanced mobility options and paves the way for a future fully integrated, multi-modal transit system in Los Angeles. The most complex project undertaken by Metro, it consists of aerial, below-grade, and at-grade segments with two miles of twin-bored tunnels, safety-enhanced grade separations, eight stations, and a new maintenance facility.

This rail line connects the Metro Exposition Line and Green Line, which in turn connect to other lines that extend throughout LA County. For residents of South Los Angeles, an economically challenged community, the line offers a pathway to upward mobility, economic development opportunities, access to jobs, affordable housing, healthcare, education, and other services.

Our construction management support services team has nurtured relationships with Metro, the design-build team, transit agencies, government officials, residents, business owners, community groups, media, and other stakeholders.



Toronto Transit Commission (TTC) Construction Management Services

Toronto Transit Commission
Toronto, Ontario

Providing construction management staff augmentation to support TTC's capital projects.

The Construction Department within the Toronto Transit Commission is responsible for the delivery and management support of various capital projects with a 10-year capital program budget of approximately C\$2.3 billion. To respond effectively to increased workload, TTC supplements its in-house resources with consultants and reached out to our team to help provide construction management resources and services.

In our role, we scheduled formal and informal meetings with TCC employees to listen to their concerns, establish a stronger working relationship, and gain insight into their needs to respond to the requests for services more effectively.

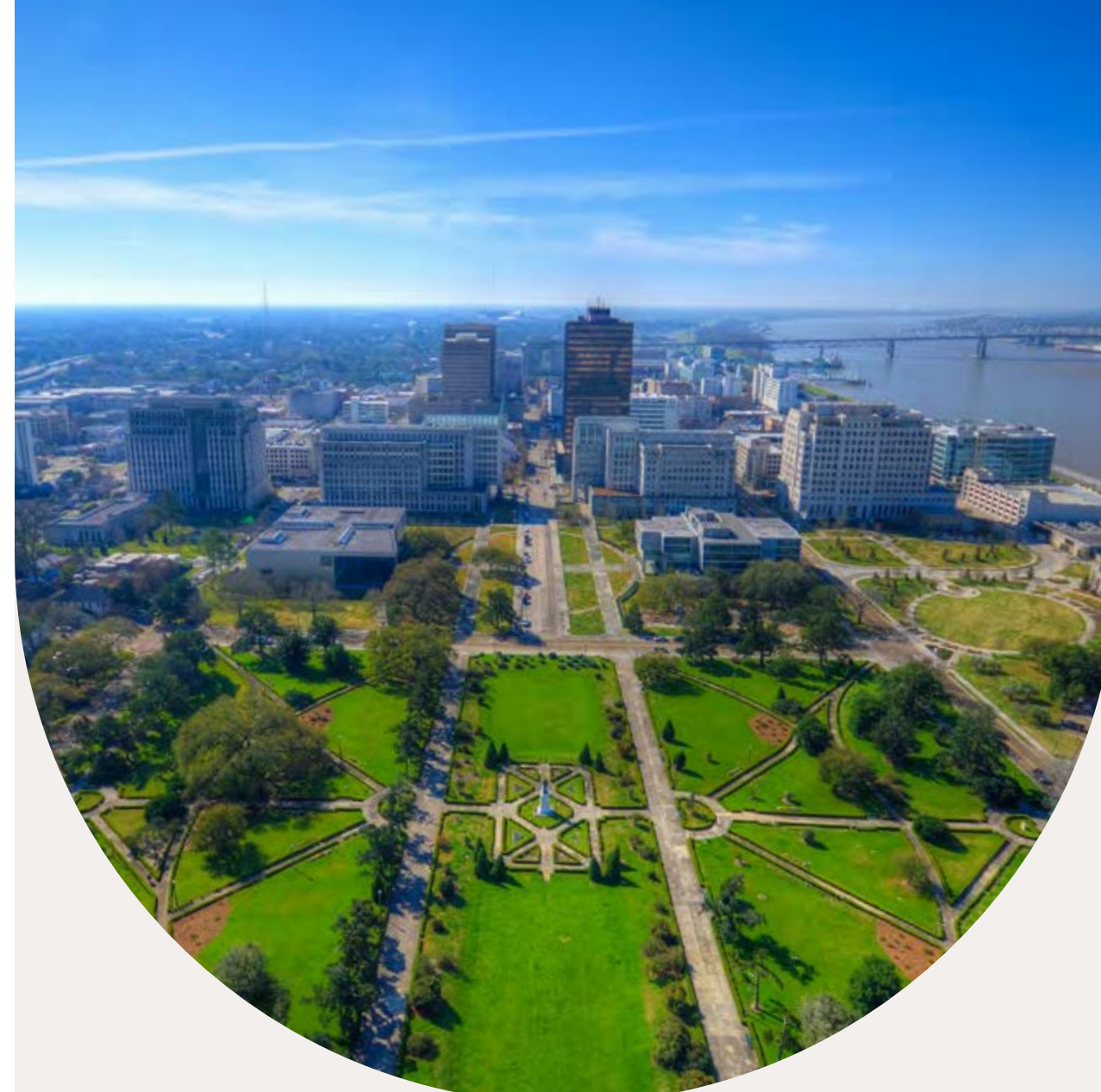
By being able to readily staff critical projects, TTC can continue improving and enhancing the services it provides in moving the public in and around Toronto.

MOVEBR Program Management

East Baton Rouge City Parish Department of Public Works
Baton Rouge, Louisiana

Leveraging a programmatic approach to improve traffic flow, safety, pedestrian and bicycle mobility, and transit accessibility across Baton Rouge.

The MOVEBR Program comprises 70+ projects, 40+ new capacity improvements, and 30+ corridor and mobility enhancements to relieve traffic congestion and enhance community roadway corridors throughout East Baton Rouge Parish. Stantec was selected as one of two program managers to oversee a specific group of approved projects that address existing corridor improvements, community enhancement, and parish-wide signalization/synchronization. We are also currently leading the effort to implement a Small Business Outreach Program, targeted at increasing participation for eligible small businesses in the local area and beyond. The program is being funded via a ½ cent sales tax and is valued at \$1.1 billion.



Toronto-York Spadina Subway Extension

Toronto Transit Commission
Toronto, Ontario

Helping the TTC keep its finger on the pulse of this multi-billion-dollar transformational transit project.

The \$3.2 billion (CAD) Toronto-York Spadina Subway Extension provides a critical branch to the existing TTC subway system between Toronto and the Regional Municipality of York. The project consisted of six new stations and an 8.6-kilometer twin-tunnel line from Downsview Station in Toronto to the Vaughan Corporate Centre in City of Vaughan, connecting York University to downtown Toronto and adding 2,900 commuter parking spaces. Involved since the project's inception in 2008, our Program and Construction Management team had up to 85 full-time employees at the height of our Project Controls engagement. The staff worked at eight locations, including the six new station sites and at the client's project office in Toronto. We provided cost control, contract administration/procurement, scheduling, estimating, property purchase support, document control, risk management, claims support, and office management services. We integrated separate TTC operating systems into one platform, improved process flow, and delivered reliable project information in a complex cross-functional and multi-stakeholder environment.

Northern Alberta Institute of Technology – Centre for Applied Technology

Northern Alberta Institute of Technology
Edmonton, Alberta

Stantec was retained by NAIT to provide project management services to augment and lead NAIT’s Facilities Management and Development team for the delivery of the project.

Stantec’s Program Management team integrated with NAIT Facilities Management and Development group and provided full project management services. Our team managed all aspects of design completion, construction, commissioning and operational readiness, and move-in.

Our delivery team managed the consultant team, construction manager, stakeholders including engaging various levels of NAIT leadership, instructional and facilities operational staff. Through steady oversight of budget, schedule, quality, and risk control, we guided the project through to successful completion. One of the most complex scopes was managing the \$30M of equipment and furniture to support the technology simulation labs and the staff offices.

The result was delivering on schedule a five-story 51,000m² facility accommodating 5,000 full-time students, and 300 staff. The project was delivered below the \$294M budget and achieved LEED Gold certification.



Halton Healthcare Services - New Oakville Hospital Operational Readiness

Halton Healthcare Services Corporation
Oakville, Ontario

Helping operations staff achieve the transformative and adaptive change required to provide patient care and services in new ways in a new facility.

The New Oakville Hospital is a state-of-the-art facility, delivered using an Alternative Financing and Procurement (AFP) model through Infrastructure Ontario. When complete, it will provide a full range of health services, including complex continuing care, rehabilitation, and acute care.

In addition to serving as the planning and design consultant, Stantec is providing AFP planning and advisory services and operational readiness planning services to Halton Healthcare. The project’s key challenges lay in helping operations staff achieve the transformative and adaptive change required to provide patient care and services in new ways in a new facility. Partnering with Halton Healthcare’s senior personnel, Stantec is facilitating, developing, and monitoring an integrated, rigorous Operational Readiness Plan, including resource, sequencing, process change, and furniture and equipment components. We are also identifying and mitigating key operational risks and providing project oversight and dashboard reporting to senior management and the board of directors.

Stantec Architecture Ltd. (PDC); Parkin Architects in joint venture with Adamson Associates Architects (Proponent).

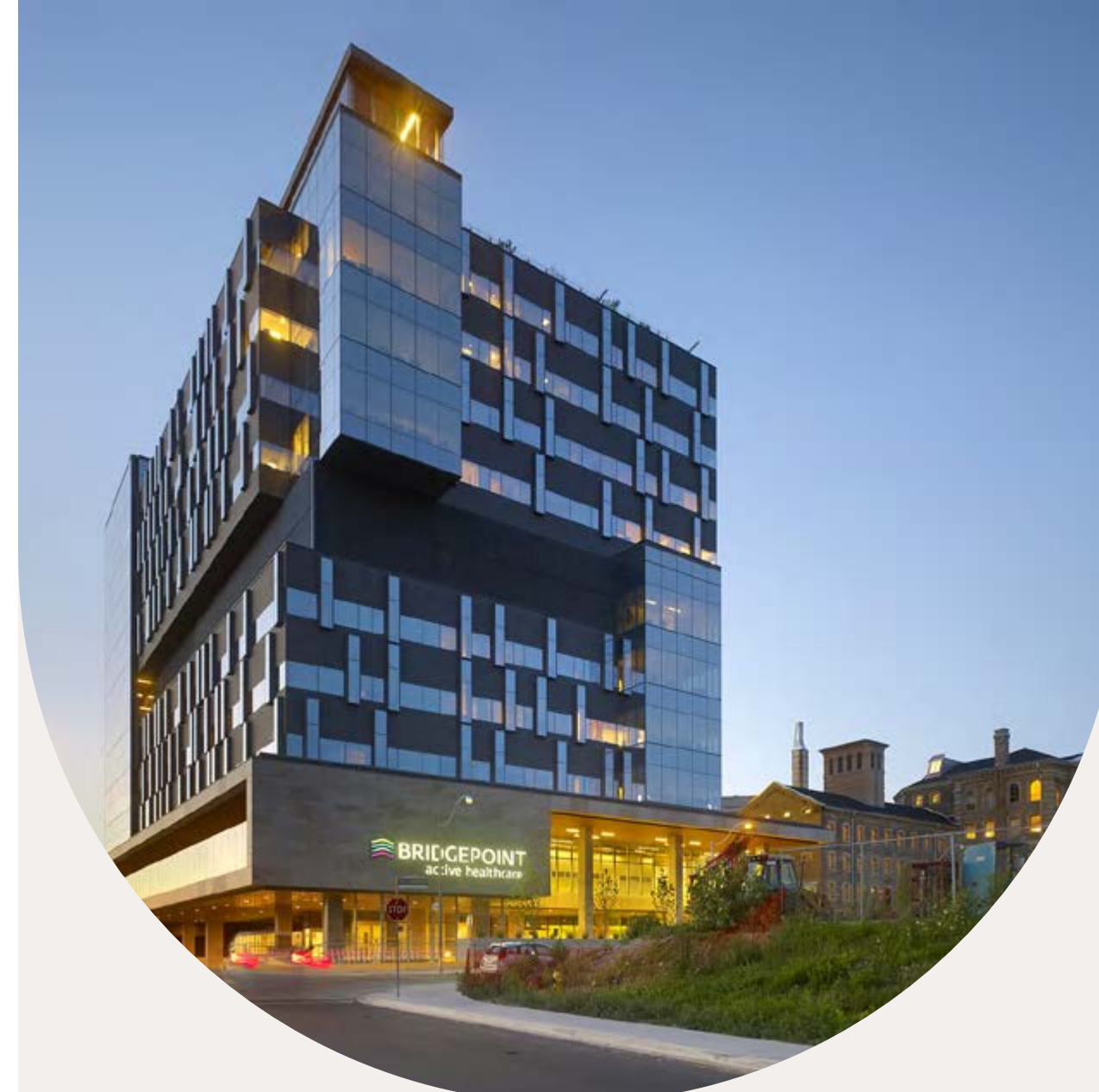
Laurentian University School of Architecture – Operational Readiness

Laurentian University
Sudbury, Ontario

Facilitating, developing, and monitoring an integrated operational readiness plan to achieve phase 1 opening day success.

The Laurentian University School of Architecture is a new facility being constructed on a repurposed site in downtown Sudbury, Ontario. A part of the University’s strategic plan for growth, the project is seen as a key contributor to economic revitalization of downtown Sudbury. Construction is in two phases.

We provided operational readiness services to the University and, in particular, its project steering committee. The project’s key operational challenges result from it being located on a geographically separate site from the main campus, integration with the downtown core and the main campus, and from the two-phase opening. As an advisor to the steering committee for both operational readiness planning and capital integration, we are facilitating, developing, and monitoring an integrated operational readiness plan to achieve phase 1 opening day success. This includes identifying and mitigating key operational risks and providing executive dashboard reporting to the steering committee.



Bridgepoint Active Healthcare Redevelopment – Operational Readiness

Bridgepoint Active Healthcare
Toronto, Ontario

Operational readiness planning aimed at transforming the care, not just the building.

Bridgepoint is a healthcare center focused on complex health conditions. It partners with both acute centers and community-based providers to ensure patients who need long-term recuperation or rehabilitation get the services they need. Elements include a positive environment and dedicated healthcare professionals who share their recovery goals.

Built in the 1960s, the existing hospital lacked the space and amenities to provide the transformative care that defines healthcare today. When Bridgepoint partnered with us for the building of a new hospital, they embraced our proposal to use operational readiness planning. This approach involved collaboration throughout the project and aims at transforming the care, not just the building.

Energy Gateway Transmission Project

PacifiCorp
Colorado, Wyoming, Idaho, and Utah

Addressing customer load growth, improving system reliability, and reducing transmission system constraints.

Since 2011, our team has been executing program and construction management for the 2000+ mile 345kV Energy Gateway Transmission project by collaborating with PacifiCorp's Program Management Office. Under Stantec's Program & Construction Management department, staff have been integrated into the PacifiCorp Gateway program as project managers and coordinators for the largest transmission program within the US with multiple projects in Colorado, Wyoming, Idaho, and Utah.

Stantec is providing full program management services overseeing all requirements for pre-construction through to final construction execution activities to place transmission lines and related facilities into service safely, on time, on budget, and within governance. Our staff manages all project elements to include initial concepts and feasibility studies, routing and siting, permitting with federal and local/state agencies, and managing other PacifiCorp vendors such as engineer-of-record, various natural and physical resource vendors, and right-of-way contractors to meet critical project and program milestones. We are responsible for full cost governance (budgeting, forecasting, and accruals for the project) and the coordination of work to finalize projects through construction and commissioning. We are also executing various NEPA requirements for the project across multiple geographical and jurisdictional regions.



Southeast New York Offshore Wind Platforms, HVDC Substations & Transmission (SENY)

NYPA
New York, New York

Revitalizing New York's Power Grid to achieve a fully renewable power system throughout New York by 2040.

The SENY project consists of feasibility studies for the Offshore Wind Platforms, HVDC Converter Stations, and Transmission and Distribution projects throughout New York and surrounding areas for the NYISO Public Policy Transmission Notice.

Collaboratively with the design team executing the feasibility study for the HVDC Converter Stations, Stantec's Program & Construction Management team completed Risk Management, Monte Carlo Analyses, Cost Estimating, Construction Scheduling, and Constructability Assessments for the project. During the project, Stantec was awarded additional scope to complete a full Risk Management process and Cost Assessment of the entire project collaboratively with three other consulting firms. Risk Management included working with internal and external subject matter experts to identify key risks and opportunities and developing mitigation plans. Environmental services and assessments were completed for each of the substation sites and included in the risk analyses. Cost Estimates of over \$10 billion were completed effectively and utilized to complete various Monte Carlo analyses to determine accurate contingency costs.

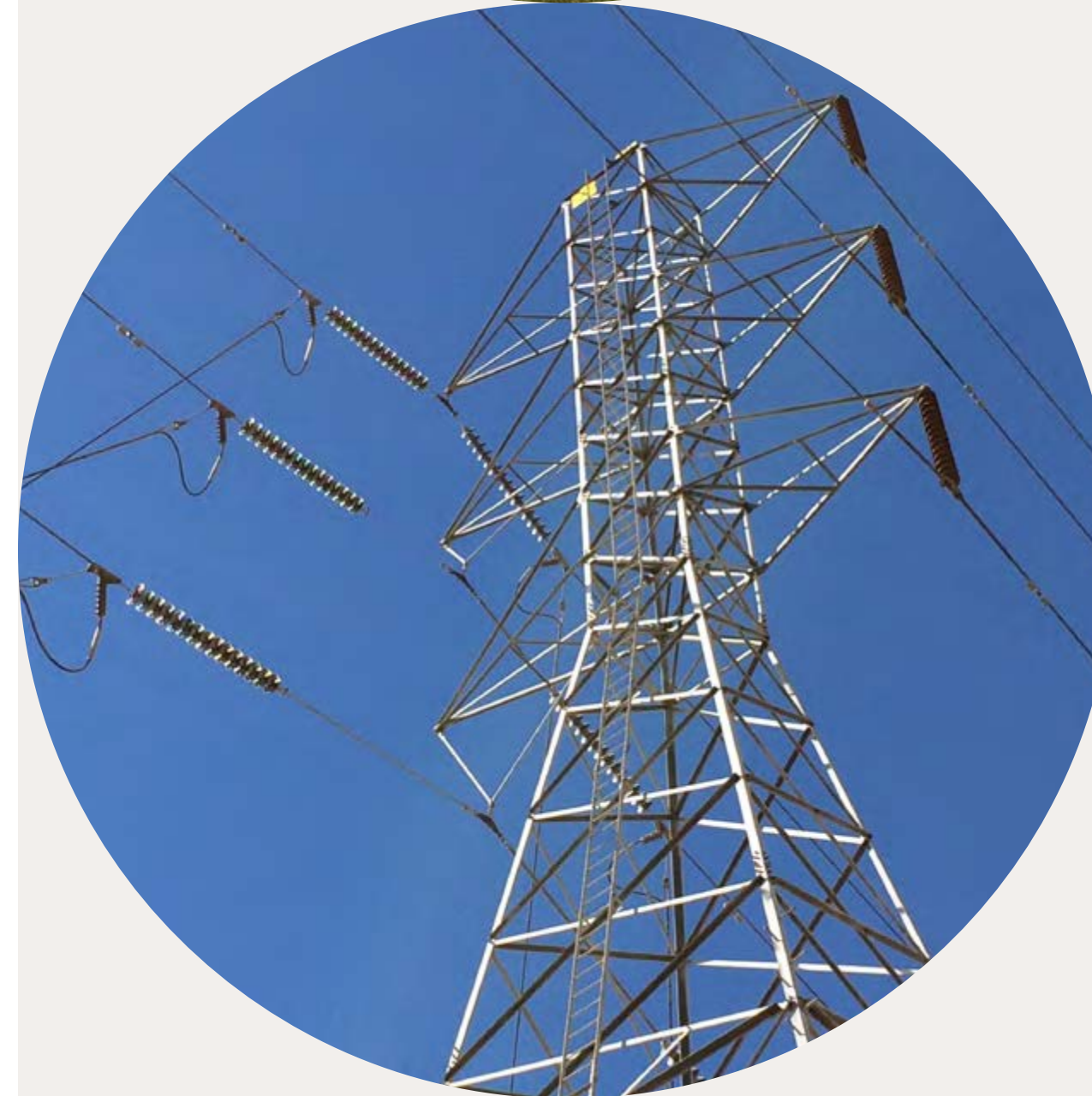
Boardman to Hemingway Transmission Line

Idaho Power
Oregon, Idaho

A “Clean-Energy Pipeline” that will support Idaho’s goal of providing 100% Clean Energy by 2045.

The Boardman to Hemingway Transmission Line is a 270.8-mile-long single-circuit 500-kV electric transmission line that crosses five counties in Oregon, Morrow, Umatilla, Union, Baker, and Malheur counties. The approved facility also includes four ASC alternative routes of approximately 33.3 miles of transmission line. The RFA1 approved routes include four alternative 500-kV transmission line routes equaling approximately 8.8 miles.

Our Program and Construction Management team is collaboratively working with the Idaho Power’s Transmission Program Management Office. Stantec staff have been integrated into Idaho Power’s program to execute program management services, overseeing all requirements for pre-construction through to construction completion to place the transmission line and related facilities into service. Our team manages pre-construction activities, noise mitigation assessments, construction scheduling, long lead material strategies and procurement, project controls, cost management, and the development of GMP RFP packages for general contractor contracts for construction scopes. Our primary focus is to reduce project risk by safely executing the project, within budget, duration, and governance.



The Power of Stantec

Implementing worldwide best practices, innovative solutions, and technical knowhow to support your capital improvement strategy.

We collaborate across disciplines and industries to bring buildings, energy and resources, and infrastructure projects to life. Our work—professional consulting in project management, planning, engineering, architecture, interior design, landscape architecture, surveying, environmental sciences, and project economics—begins at the intersection of community, creativity, and client relationships. Our team can assist with a variety of services including:

- Program/project management
- Construction management
- Schedule & cost controls
- Permitting & approvals
- Architecture
- Multi-discipline engineering
- Interior design
- Landscape architecture
- Strategic/master planning
- Operational planning
- Signage & wayfinding
- LEED® sustainable design
- Commissioning
- Environmental
- Geotechnical
- Remediation
- Traffic & transportation consulting
- Indoor environmental
- Quality testing
- Cost estimating





Stantec is a global leader in sustainable architecture, engineering, and environmental consulting. The diverse perspectives of our partners and interested parties drive us to think beyond what's previously been done on critical issues like climate change, digital transformation, and future-proofing our cities and infrastructure. We innovate at the intersection of community, creativity, and client relationships to advance communities everywhere, so that together we can redefine what's possible.

Connect with us

Brian Norris

Senior Vice President

PMCM Business Leader

brian.norris@stantec.com

(707) 885-9977